

FEATURED PLANT OF THE MONTH



TINKERBELLE LILAC
Syringa 'Bailbelle'

24-36" specimen
2 gal. container

\$25.00

The Tinkerbelle Lilac is a recent introduction from Bailey's Nursery. In late spring when most other lilacs are done blooming, "Tinkerbelle" is just beginning to show her splendor. This wonderful little lady produces wine red buds that emerge into spicy fragrant pink blooms that you truly have to smell to appreciate.

Unlike many other old fashioned Lilacs, "Tinkerbelle" is well behaved with little to no suckering and in most cases she is considered a dwarf only reaching 6-7' tall by 4-5' wide.

If you are looking for a sun-loving specimen that will start to show her flowery love immediately, stop in to our nursery for an introduction. You won't be disappointed you did.

MEMORIAL WEEKEND

With the threat of Frost behind us (cross your fingers), Its time to take up your spade and replace all those beautiful plants eaten by the rabbits, voles, and deer. If your yard looks like ours did, you know exactly what we are talking about!

If you are not going away for the holiday, feel free to stop in. Our staff will be at the nursery looking forward to assisting you and answering your questions. Delivery Service will also be available.

Monday-Friday 8:00 am – 6:00 pm
Saturday 8:00 am – 4:00 pm
Sunday 10:00 am – 2:00 pm
Memorial Day Closed

UP-COMING SEMINARS

FOR THE LOVE OF ANNUALS

Learn professional techniques for laying out a designer annual bed, including placement, planting and care. *Class is open to 10 people.*

*June 10, 2008, 12:00pm Lizer Office
Call (920) 468-1813 to register*

PRUNING FOR HEALTH

Learn the reasons for pruning trees and shrubs and simple techniques that can be used to keep your plants healthy throughout the years. *This free class is open 10 people.*

*June 24, 2008, 12:00pm Lizer Office
Call (920) 468-1813 to register*

MAINTAINING YOUR INVESTMENT

Beautiful landscaping does not come cheap, as many of you know. Sure it's easy to put a few plants in the ground, water them, and watch them grow, but what do you do when they have grown too much? Why are you getting so many weeds?

In a perfect world, we could accommodate your desire for a no-maintenance landscape. But, there is no such perfect scenario... Landscaping requires maintenance.

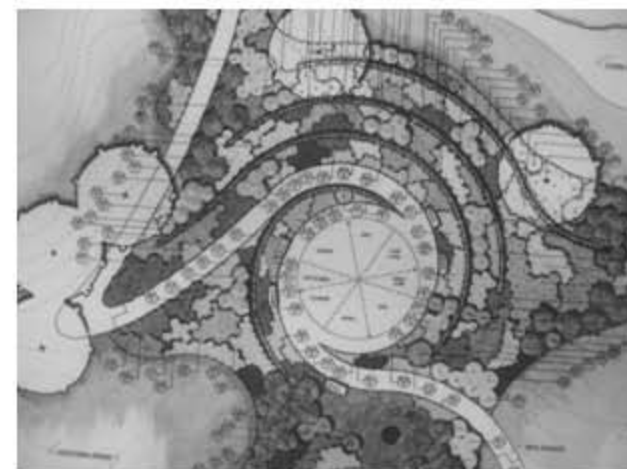
The cooler weather this spring is keeping the window open to apply a time-released, pre-emergent herbicide to your landscape beds. This, in addition to a new blanket of mulch, will help keep those pesky weeds at bay.

In addition, if you are careful, you can apply a contact herbicide to weeds that have beaten you to the punch. Before your perennials get too large, you can create a "cardboard shield" to protect your "good plants" from overspray. Just be sure to follow the directions, especially if you are using a concentrate formula. More is not always better.

Its not too late to have a low maintenance year. Get out there while the weather is cool and use that green thumb so you can reap the benefits of your spring endeavors this summer.

And don't forget that if you are overwhelmed at the thought of doing your own maintenance, we would be more than happy to give you a hassle-free quote.

FROM THE DESIGN DESK



SIX FALLS BOTANICAL GARDEN, 2002

"Planning a garden is like composing music. It is not enough to jot down an abstract collection of beautiful notes. They should be put together in lyrical phrases, then harmonious movements, and finally, linked in a grand symphony. Think of the groups of plants as phrases, the flower borders and major groupings as the movements, and the whole property, of whatever size, as the symphony."

Angela Overy "The Foliage Garden"

There is no time like the present to plan your dream landscape. Let our expert staff assist you in creating that garden symphony you long for. Stop gardening by "trowel and error" and start reaping the benefits of a professionally designed landscape. If you haven't seen what we can do for you, stop in for a no hassle tour and meet our design staff. Sam, Etta, Brad, and Jeremy are waiting to greet you.